



SKS STEEL ZAMBIA



SKS STEEL ZAMBIA LIMITED

*Steel Casting and Iron Foundry
Off Kalengwa Road, Chief Nkana, Kalulushi, Zambia*

*Email: skssteelz@gmail.com, ybsingh1993@gmail.com
Contact: 0976037408/0950863175*

CONTENTS

- Introduction
- Mission Statement
- Quality
- Products
- Management
- Environmental Policy
- Health and Safety Statement
- Certificates with relevant Authorities



INTRODUCTION

SKS Steel Zambia Limited is a Zambian company incorporated under the Company's Act of 1994, located in Kalulushi. Our company is committed to providing efficient and high-quality service to our clients. As a versatile manufacturer, we specialize in producing highly customized products in the field of Grinding Media production. Our mission is to deliver quality castings and grinding media products worldwide to our customers' satisfaction. To maintain and enhance our leading position, our team is constantly developing new grades and applications.

At **SKS Steel Zambia**, we strive to rise to new challenges and set new standards to delight our customers by providing the best possible products. We achieve this by utilizing the best technology, productivity, and manpower consistent with modern management practices. We recognize that while honesty and integrity are essential ingredients of a strong and stable enterprise, profitability provides the main spark for economic activity.

Our company is managed by dynamic and highly technically qualified professionals with three decades of core experience in casting, grinding media, and metallurgical line of business. Our unique staff is willing to support you in creative product design, from a simple tolerance review to full-scale concurrent engineering. Our experienced personnel at our plant site take care of any assistance needed.

MISSION STATEMENT

SKS Steel Zambia is committed to bringing our customers' visions to life through innovative and high-performance solutions. Our mission is to establish strong partnerships with our clients in a secure environment, where creativity and value creation thrive.

INITIATIVE: We are driven by a spirit of initiative to continuously find and deliver high-performance solutions that meet and exceed our customers' expectations. At **SKS Steel Zambia**, we foster innovation and actively pursue product technology R&D, while increasing productivity and optimizing work procedures.

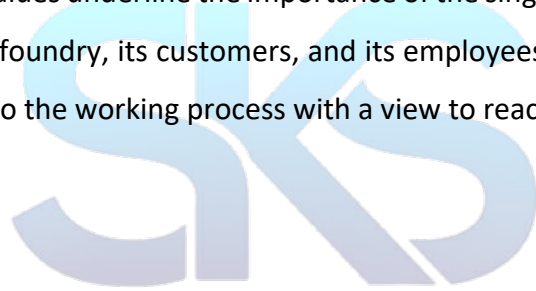
FAIRNESS: We take pride in our ability to understand our customers' needs, both internal and external, and create tailor-made solutions that establish highly collaborative relationships and long-term win-win partnerships. Our commitment to honesty, integrity, and responsibility is reflected in our behaviour towards the company and society, and we always strive to defend important principles.

QUALITY & SECURITY: At **SKS STEEL ZAMBIA**, quality and security are the core values that guide our operations. We are committed to upholding the highest quality standards in all our processes, from start to finish. Our team of highly skilled professionals ensures that every component is thoroughly inspected and treated with appropriate chemical and physical inspections to guarantee reliable and quality services to our esteemed customers.

We understand that our customers rely on us to provide a secure environment in which they can realize their ideas to the highest standard. That is why we have a continuous commitment to maintaining a secure environment, earning our customers' trust as a valued partner to unleash their full potential.

RESILIENCE THROUGH EXECUTION: At **SKS STEEL ZAMBIA**, we value resilience as a critical factor for success. Resilience allows us to interpret the context, go through significant changes, and emerge victoriously. We are committed to overcoming technological and circumstantial challenges of the future by adapting to the context, elaborating standardized processes, and creating strict disciplines. Our team meets our goals through rigorous planning, efficient execution, detailed follow-up, and timely problem resolution, keeping in mind the environmental changes.

INTERDEPENDENCE: We recognize the importance of interdependence and cooperation, especially in the foundry-customer interrelationship, in individual work teams, and between each member of our workforce. At **SKS STEEL ZAMBIA**, our company goals are achieved by cooperation between disciplines, taking proper ownership and accountability while understanding each other's role and challenges for success. Our values underline the importance of the single parts of a larger system comprised of the foundry, its customers, and its employees, simultaneously evoking their connection to the working process with a view to reaching common goals.



QUALITY

At **SKS STEEL ZAMBIA**, our unwavering commitment to quality and customer satisfaction drives every aspect of our business. From order placement to final delivery, our information technology systems are fully integrated with suppliers and customers, streamlining our processes for optimal efficiency.

We are dedicated to providing our esteemed customers with top-quality and reliable services. To achieve this, we conduct thorough inspections at every stage of production, from the raw materials to the final castings, and subject all components to rigorous chemical and physical testing.

Our focus on quality extends to every task we undertake, and we prioritize total employee participation, continuous improvement, and adherence to industry standards. We are committed to providing a safe and secure environment in which our customers can bring their ideas to life and realize their full potential with the support of **SKS STEEL ZAMBIA LIMITED**.

QUALITY POLICY: Our quality policy is centred on exceeding customer expectations by providing innovative and reliable foundry solutions with zero defects, all while maintaining the highest standards of quality and performance. Our competent and motivated team is fully committed to achieving these goals and ensuring our customers' complete satisfaction.

QUALITY PARTNERSHIP: Our commitment to quality excellence starts with partnering with our customers to exceed their expectations. We strongly believe that quality can only be achieved through a collaborative effort between us and our customers. This partnership starts with analysing our customer's ideas to find the right solutions that enable the achievement of even the most challenging targets, prevent issues and enhance further improvements. Our development stages are managed side by side with our customers to ensure a safe product launch as a prerequisite for future constant delivery of quality products.

INNOVATIVE AND RELIABLE SOLUTIONS: We bring our customer's products to life thanks to our innovative and reliable foundry solutions. We follow a stage and gate approach to introduce new technologies and new products. Our product lifecycle management follows the industry standard APQP (Advanced Product Quality Planning) principles to ensure a fast and reliable process development, as well as a safe launch in series production. We constantly verify compliance with customer requirements in every project phase.

CONTINUOUS EFFORT TO ACHIEVE ZERO DEFECTS: Our structured approach to defect and variability reduction ensures constant improvement of processes and products. Feedback from customers and the field are part of the inputs to our continuous improvement and roadmap to zero-defect quality excellence. Our quality management system has been designed to satisfy customers' needs and expectations, meet statutory and regulatory requirements and continually improve processes and products.

MANAGEMENT BY PROCESS: Quality excellence and superior customer satisfaction are ensured thanks to a management by process of the whole value chain. This covers everything from customer requirements to product development, selection and management of suppliers to product fabrication, monitor of processes to management review, and from opportunity of improvement to change management.

PRODUCT

Looking for high-quality casting materials for your business, utility, or industry? Look no further than **SKS STEEL ZAMBIA**. Our alloys are ideal for a wide range of applications and industries, and we take pride in producing materials that deliver exceptional results every time. No matter what your specific needs may be, we are committed to providing you with the right alloys for the job.

CRANE WHEEL



MILL BALLS



CRUSHER HAMMER



JAW PLATE



HEAVY GEAR COUPLING

PULLEY



BRONZE BUSH



PRODUCT RANGE INCLUDES

- STEEL CASTING
- HEAVY GEAR COUPLINGS FOR BALL MILL
- MANGNEES STEEL CASTINS
- CARBON STEEL CASTINGS
- HIGH CHROME MILL BALL
- CAST IRON CASTING
- MILD STEEL CASTINGS
- BRONZE BUSH AND CASTING
- MANHOLE COVERS
- GRINDING MEDIA MILL BALLS
- GENERAL ENGINEERING PARTS

INDUSTRIES WE SERVE

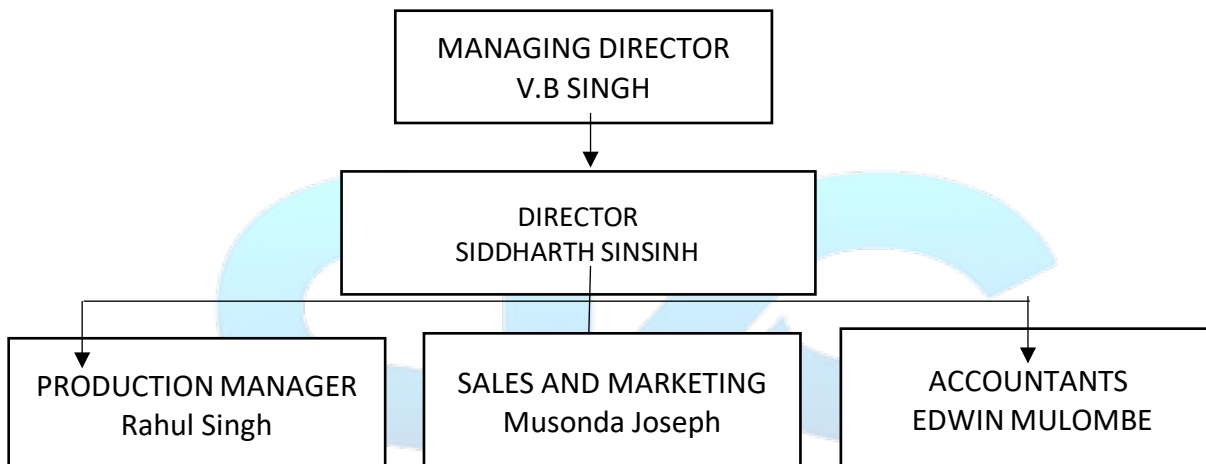
- MINING INDUSTRIES
- STONE QUARRIES
- AGRICULTURE INDUSTRIES
- TEXTILE INDUSTRIES
- SUGAR INDUSTRIES

MANAGEMENT

At **SKS Steel Zambia**, our management team is led by highly experienced and technically qualified professionals with over 30 years of core experience in the steel and iron foundry industry. Our dynamic team is committed to supporting our customers with creative production design solutions. Whether it's a simple tolerance review or a full-scale concurrent engineering project, our experienced personnel at our plant site are always available to assist you.

Our management structure includes:

SKS STEEL ZAMBIA LIMITED MANAGEMENT STRUCTURE



ENVIRONMENTAL POLICY:

Environmental sustainability is a top priority at **SKS STEEL ZAMBIA**. We are committed to conducting our business in a way that is safe, healthful and protects the environment. Our goal is to achieve a healthy and safe environment by implementing the following policies:

- Providing a safe and healthful workplace for our personnel and ensuring they are properly trained with the necessary safety and emergency equipment.
- Being an environmentally responsible neighbour in the communities where we operate and correcting any incidents or conditions that pose a risk to health, safety, or the environment.
- Conserving natural resources by adopting pollution prevention practices, such as extending the life of equipment through preventive maintenance scheduling, purchasing and reworking used equipment.
- Minimizing waste and other pollution, health and safety risks, and disposing of waste safely and responsibly by developing and improving operations and technologies.
- Ensuring responsible energy use by conserving energy, improving energy efficiency, and giving preference to renewable energy when feasible.
- Participating in efforts to improve environmental protection and understanding by sharing appropriate pollution prevention technology, knowledge, and methods with other companies.
- Utilizing university and regulatory agents (ZEMA) to assist in the development of solutions to environmental problems.
- Promoting cooperation and understanding with the public and government agencies in developing economically feasible and environmentally sound wastewater treatment objectives.
- Meeting and exceeding all applicable government requirements and adhering to stringent requirements no matter where we do business.

- Striving to continually improve our environmental management system and performance through participation in the EMS (Environmental Management System) program.
- Report any noncompliance issues promptly, in accordance with applicable government reporting requirements, and take corrective action to address the underlying causes. • Establish procedures for regularly reviewing compliance with environmental laws and regulations.
- Ensure that all employees are well-informed about, understand, and comply with all applicable environmental laws and regulations. • Promptly rectify any practice or condition that does not comply with this policy.



HEALTH AND SAFETY POLICY STATEMENT:

At **SKS STEEL ZAMBIA**, we are committed to ensuring a safe and healthy work environment for all our employees. To achieve this, we will:

- Continuously strive to improve our occupational health and safety performance by keeping up with evolving community expectations, management practices, scientific knowledge, and technology.
- Comply with all laws and regulations related to public health, safety, and the environment. In cases where laws and regulations are absent, we will adopt appropriate standards that reflect our commitment to health and safety.
- Allocate sufficient resources to implement this policy.
- Ensure that all employees are aware of the policy and the legal penalties for violating laws and regulations. We encourage internal and external communications regarding this policy and our occupational health and safety performances.
- Engage in open communication with our employees, government, and the community on occupational health and safety issues. We will contribute to the development of relevant occupational health and safety legislation and regulations and support occupational health and safety research.
- Train and hold individual employees accountable for their areas of responsibility.
- Manage risk by implementing management systems to identify, assess, monitor, and control hazards. We will conduct periodic reviews and audits of all our operations and activities to ensure that we implement this policy.